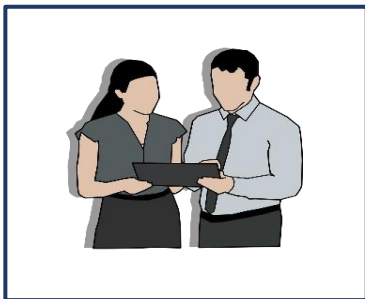




Participant Information Sheet for Children (6 – 9 years)

To be read by parent/carer if required.

What is Spectrum 10K?



We would like to invite you to take part in a research study called Spectrum 10K. Spectrum 10K is a research study that is trying to understand more about autism. Research is when we ask people questions and do tests to find out answers to important questions.

Why Me?

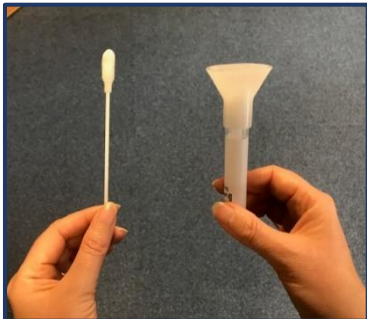


You have been chosen because you are autistic, or you have an autistic family member. We want to understand how autism has affected you or your family member. To help you understand this letter you can ask your parent, or the person who looks after you, to read it for you. Talk to your parent or doctor about it.



What will happen if I take part?

We will ask you and your parent, or the person who looks after you to answer questions about your health and what life is like for you. We may also ask you to complete questionnaires (such as a memory test).



We will send you a tube (spit kit) and a small sponge.



This is to soak up some of your spit (saliva). Your parent or the person who looks after you will help you do this.



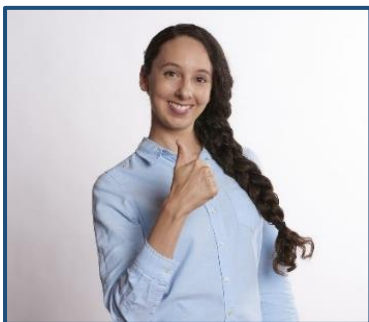
We will also ask your doctors what treatment you have had, if any. We will put your medical information in a database.

What happens to what the researchers find out?

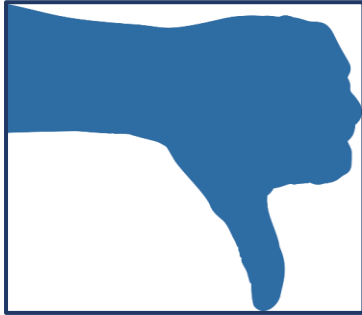


Other people may look at the information from the tests but they will not know it is about you. We will not talk to anyone else about you, it is **confidential**.

Do I have to take part?



No, you do not have to take part. It is your choice if you would like to join and you can change your mind whenever you like.



If you say **no**, it will **not** change the care you get. Talk to your parents or the person who looks after you about the study. You must get their permission if you want to take part.

What else happens?

If you wish we can send you a newsletter each year, to tell you what we have found. We may let you know about other studies and ask if you would like to join in the future.



If you are unsure about anything, talk to your parent or the person who looks after you. If you have any questions, you can contact us at any time.

Email: Our email address is info@spectrum10k.org



Thank you for your time!